

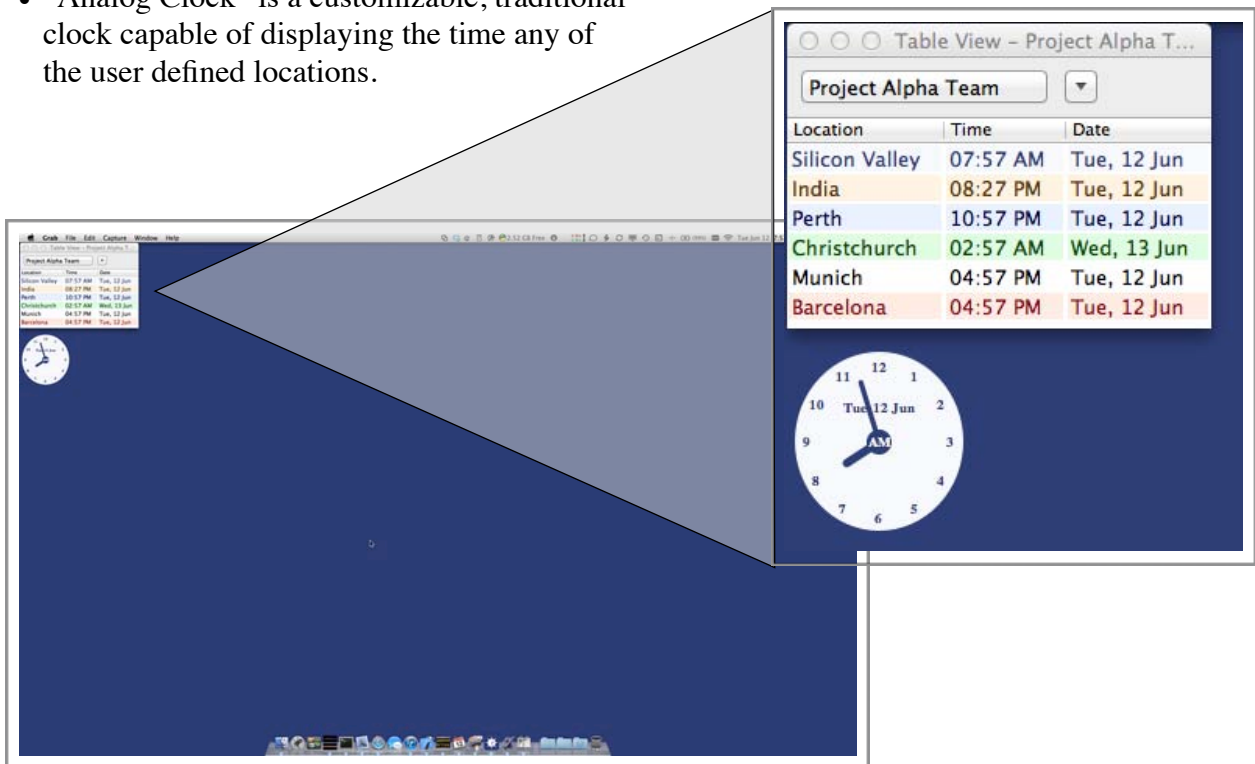


sdTime

A compact, multi-time zone clock that displays the current time and date in user defined groups.

Features

- User defined location names
 - User definable colors for each location
- User defined group names
- Support for the 400+ time zone definitions supported by Mac OS X.
 - Leverages Mac OS X's native time zone support for the IANA time zone definitions.
 - No network access required.
- “Table View” displays the full group in a single window. Sorting options include:
 - A user defined order
 - User defined location name
 - Time and date
 - Time zone name
 - Time zone abbreviation
 - GMT offset
 - Daylight Savings Time information
- “Planning View” is a version of Table View designed to answer the question: What are the times at....
 - Select any of the time zones in the group.
 - User specified date and time
- “Analog Clock” is a customizable, traditional clock capable of displaying the time any of the user defined locations.



Contents

This document consists of the following sections:

[Features](#)

[Feedback and Support](#)

[What's New](#)

[sdTime's Windows](#)

[Table View](#)

[Multiple Table Views](#)

[Table View Menus](#)

[Reordering Columns](#)

[Resizing Columns](#)

[Table View Columns](#)

[Resetting Displayed Columns](#)

[Analog Clock](#)

[Colors](#)

[Multiple Analog Clocks](#)

[Analog Clock Menu](#)

[Scaling](#)

[Planning View](#)

[Application Preferences](#)

[Persistence of Settings](#)

[Differences in Persistence Behavior](#)

[Accessing Application Preferences](#)

[The Groups Pane](#)

[Group Operations](#)

[Group Content](#)

[Reviewing a Group's Time Zones](#)

[Renaming a Group](#)

[Reordering the Time Zones in a Group](#)

[Deleting a Location or Time Zone from a Group](#)

[Time Zone Definition](#)

[The Columns Pane](#)

[The Analog Clock Pane](#)

[The Default Formats Pane](#)

[Time and Date Formats](#)

[Time Zone Selection](#)

[Country and Region Columns](#)

Feedback and Support

I want your feedback. I am interested in hearing about:

- What you like about sdTime?
- What would make it more useful to you?
- Describe bugs or unexpected behaviors you find. When providing feedback, try to provide enough information to make it easy for me to reproduce and address.

Web site: <https://www.saphiredog.com/sdTime>

E-Mail: support@saphiredog.com

What's New

1.2.0 Release:

- Table View now has support for custom location colors.
- Analog View has a number of improvements:
 - A number of new options:
 - Arabic numerals (1, 2, 3, 4, ...)
 - Roman numerals (I, II, III, IIII, ...)
 - Transparency
 - Contextual menu for location selection and options
 - Ability to display date, location, group, and time zone abbreviation on clock face.
 - AM/PM indicator on clock face
 - AM/PM color swapping
 - Solid clock face or transparent clock face
 - Dots for hour markers
 - Aesthetically improved scaling from small to full screen with proportionate increases in the size of the hands and the fonts.
- Planning View - A new view that allows you to quickly see the date and time in all locations in a group at a user specified date and time.

1.1.0 Release:

- Added Country and Region to the time zone definitions.
- Added the ability to search time zones

sdTime's Windows

There are several types of windows available in sdTime:

- **Table View** - view the time in multiple time zones.
- **Analog Clock** - a configurable analog clock presentation of the time in one time zone.
- **Planning View** - view time time in multiple time zones for a user specified date and time.
- **Application Preferences** - defines time zone groups, location names, time and date format, columns displayed in the Table View, and features of the Analog Clock.

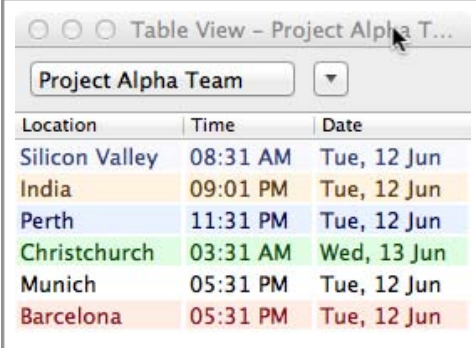
Location	Time	Date
Silicon Valley	08:31 AM	Tue, 12 Jun
India	09:01 PM	Tue, 12 Jun
Perth	11:31 PM	Tue, 12 Jun
Christchurch	03:31 AM	Wed, 13 Jun
Munich	05:31 PM	Tue, 12 Jun
Barcelona	05:31 PM	Tue, 12 Jun

The capabilities and function of each of these window types is described in subsequent sections.

Table View

Table View is designed to be the primary view. It consists of three components:

1. A group selection pop-up button that displays a menu to select the user defined time zone group to view.
2. An options pop-up button that displays a menu to select the sort order and the columns to display.
3. The table itself.



Location	Time	Date
Silicon Valley	08:31 AM	Tue, 12 Jun
India	09:01 PM	Tue, 12 Jun
Perth	11:31 PM	Tue, 12 Jun
Christchurch	03:31 AM	Wed, 13 Jun
Munich	05:31 PM	Tue, 12 Jun
Barcelona	05:31 PM	Tue, 12 Jun

As released, the Table View's table displays three columns: Location, Time, and Date. These columns can be changed either through the pull-down menu, or in the Application Preferences.

The format of the time and date displayed in the table can be defined in the application references.

NOTE: Pull-Down Menu Settings verses Preferences Settings

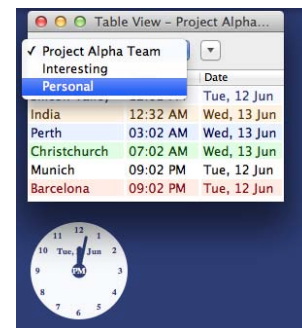
Using the pull-down menu to change the settings alters only the current window. Please refer to the section [Persistence of Settings](#).

Multiple Table Views

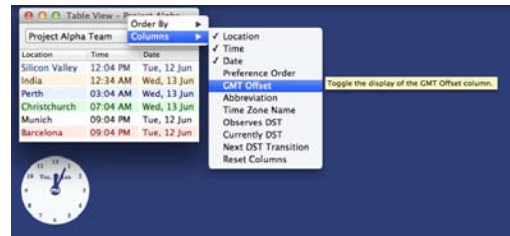
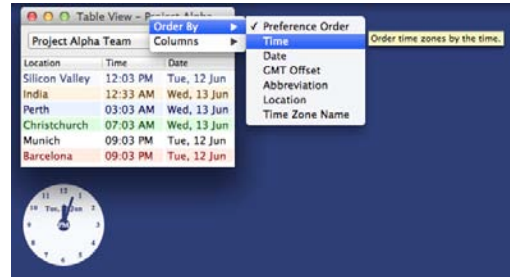
The program will open with a single Table View. It is possible to have multiple Table Views open by selecting "Table View" in the menubar "Window" menu.

Table View Menus

The first pop-up button menu contains the name of the group that is currently being displayed. Pressing this button will show a list of the groups. Selecting a new group will change the locations displayed in the table.



The second pop-up button menu is a small button with a triangle on it. The menu displayed by pressing this button changes the sort order and the columns being displayed in the current view. Refer to the section [Table View Columns](#).



Reordering Columns

The columns can be reordered by selecting the column header and dragging it accordingly.

Resizing Columns

The columns can be resized by clicking on the column header and positioning the pointer over the divider between the columns and dragging the divider.

When the pointer is in the correct position to resize the column it will change to a vertical bar with arrows indicating the directions in which the divider can be moved.

Table View Columns

Column is the name of the column.

Sort indicates whether or not the contents of the Table View can be sorted by the values in this column.

Description is a description of the contents of the column.

Column	Sort	Description
Location	Yes	The user defined location name assigned in the Application Preferences.
Time	Yes*	The time of day for the time zone displayed using the format specified in the Preferences.
Date	Yes*	The date for the time zone displayed using the format specified in the Preferences.
Preference Order	Yes	An integer that represents the order of the time zones in the group as specified in the Preferences.

Column	Sort	Description
GMT Offset	Yes*	The hours and minutes offset from Greenwich Mean Time/UTC. This value is computed from value returned by the operating system.
Abbreviation	Yes	The short abbreviation used to represent the time zone (eg: PDT, CEST). This value is obtained from the operating system.
Time Zone Name	Yes	The time zone selected in Preferences for this Location. The list provided is the list of time zones supported by Mac OS X.
Observes DST	No	Yes/No Identifies whether or not the time zone selected observes Daylight Savings Time at some point during the year.
Currently DST	No	Yes/No/- Identifies whether or not Daylight Savings Time is currently in effect for the time zone. '-' indicates that the time zone does not observe Daylight Savings Time.
Next DST Transition	No	If the time zone observes Daylight Savings Time, this column indicates the date of the next transition. If it is currently Standard Time this column will indicate the date that Daylight Savings Time will start. If it is currently Daylight Savings Time, this column will display the date that Daylight Savings Time observance will end.

* **Sorting by Time, Date, or GMT Offset**







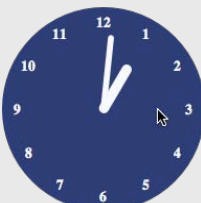





Sorting by Time, Date, or GMT Offset will display the list in the merged date-time order. Date and Time all sort by the offset from GMT and not the specific date or time being displayed.

Resetting Displayed Columns

The Columns menu has a "Reset Columns" selection that resets the columns displayed in the current Table View window to the default set of columns.

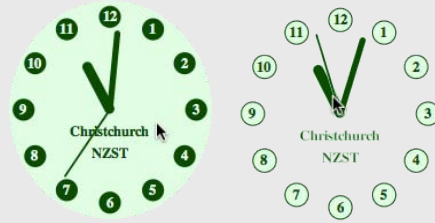
Analog Clock

The Analog Clock is a simple analog clock with a number of configuration options.

Option	On	Off
<p>Transparent The “Transparent” setting determines whether or not the window frame is transparent.</p> <p>The transparent image in this example has the “Solid Center” turned on.</p>		
<p>Second Hand Sets whether or not a second hand is to be displayed.</p>		
<p>AM/PM Indicator Turns on the display of “AM” or “PM” in the hub of the clock.</p>		
<p>AM/PM Color Inverts the foreground and background colors during the PM hours.</p>		
<p>Hour Dots Turns on the drawing of dots for each hour.</p>		
		

Solid Center

Turns on the drawing of the filled circle for the face of the clock. I find this option beneficial for small clocks with “Transparent” turned on.

**Arabic Numerals**

The familiar 1, 2, 3, on the clock face.

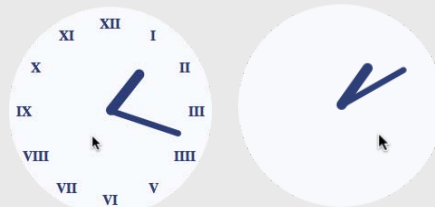
The Arabic Numerals and Roman Numerals options cannot be turned on at the same time.

**Roman Numerals**

The familiar I, II, III, ... on the clock face.

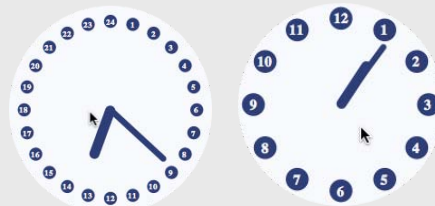
The Arabic Numerals and Roman Numerals options cannot be turned on at the same time.

And, yes, the IIII for 4 is intentional. It is traditional on clock faces to visually balance the VIII on the other side.

**24-Hour Clock**

Display the full 24-hours of the day on a single clock face.

Not recommended for use with the Roman Numerals option.

**Location**

Display the location name on the clock face.

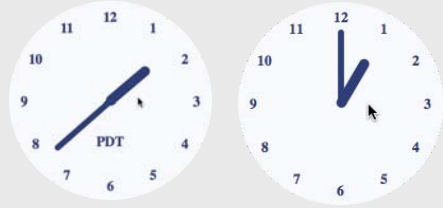
**Group Name**

Display the group name on the clock face.

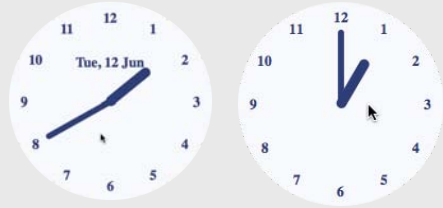


Abbreviation

Display the time zone's abbreviation on the clock face.

**Date**

Display the current date on the clock face using the format specified for the location.

**Colors**

The colors used to display the clock are the colors specified for the Location.

Multiple Analog Clocks

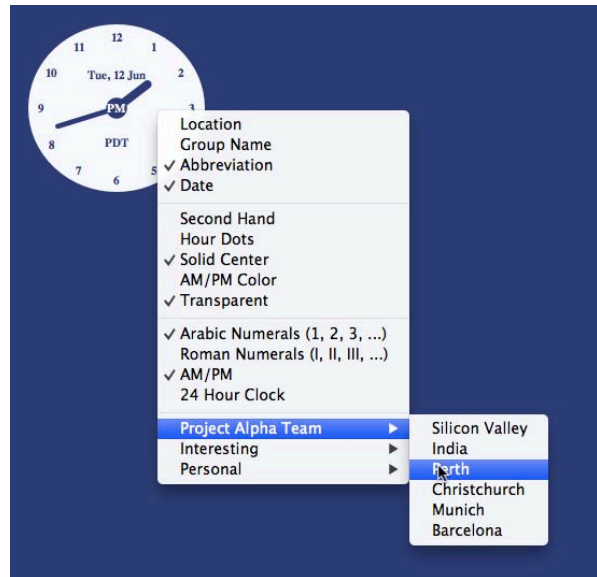
The program will open with a single Analog Clock. It is possible to have multiple Analog Clocks open by selecting “Analog Clock” in the menubar “Window” menu.

Analog Clock Menu

The Analog Clock menu is now a contextual menu that can be accessed by placing the cursor over the clock and either:

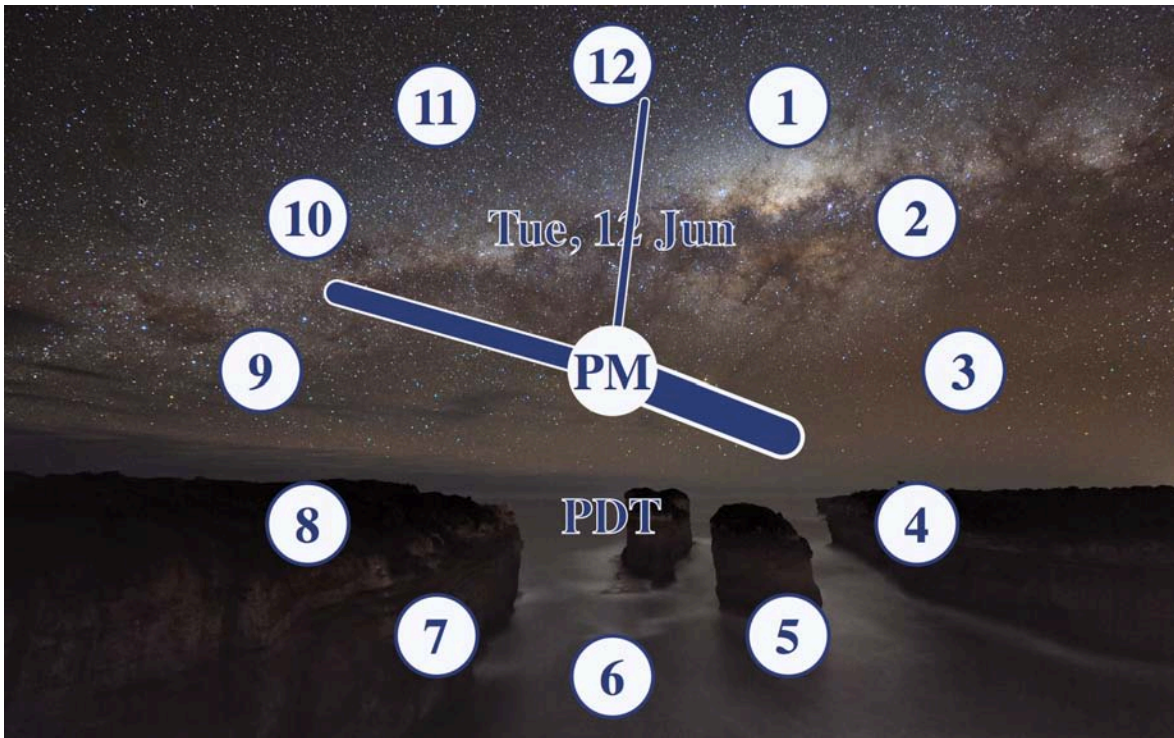
- Pressing the right mouse button.
- Hold the command (⌘) key and pressing the left mouse button.

This menu will allow you to change the settings for the clock that the mouse pointer is over.

**NOTE: Persistence of Changes**

Changes made through this interface are not persisted. Please refer to the section [Persistence of Settings](#).

Scaling



A number of the display options exist to support analog views at various sizes and with a variety of backgrounds. Most of the Analog Views throughout the rest of this document represent small clocks displayed in a corner of the screen. However, some of the settings are designed for large clocks that will work with a variety of backgrounds. Try different settings to find a combination that is pleasing to you.

The above screenshot is of a clock scaled to full height on an external monitor. The image is the desktop background.

If there is a setting you would like to see that isn't supported, please provide that feedback.

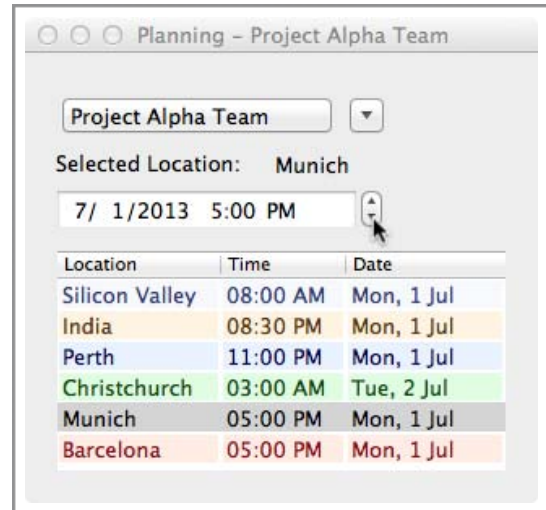
Planning View

The Planning View is a window that allows you to select a location and set the date and time for that location.

The Planning View functions the same way as the Table View except:

- The times are updated by changing the date and time in the input field.
- All of the times and dates displayed in the Planning View are computed from the date and time in the input field.

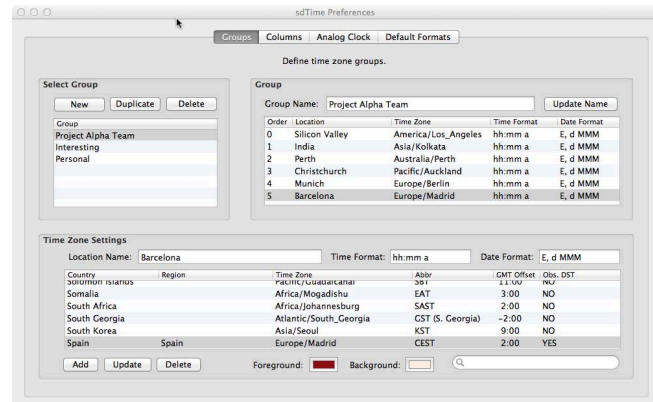
In the example to the right, the input field contains July 1, 2013, 5:00 PM for the selected location of Munich.



Application Preferences

The Application Preferences window defines the Groups and Locations as well as a number of other options.

- [Groups Pane](#) - Define the time zone groups
 - Group Name
 - Location Name
 - Time and Date display format
 - Default display order
 - Location colors
- [Columns Pane](#) - Columns to display upon opening of a Table View
- [Analog Clock Pane](#) - Set the Analog Clock display's default features:
 - Display second hand default behavior
 - Display AM/PM default behavior
 - 12 or 24 hour clock face
- [Default Formats Pane](#) - Set the default color, time and date formats. Each Location can be modified to have its own color and format in the Groups Pane.



Persistence of Settings

As previously noted, some of these configuration options can be temporarily set for a specific window using the window's pull down menu. Changes in the Application Preferences windows are saved and impact current and future windows.

Differences in Persistence Behavior

Persistence of the Groups pane in the Application Preferences is different from the Columns, Analog Clock, and Default Formats panes.

- Changes to the Columns, Analog Clock, and Default Formats pane are saved to the file immediately when the setting is changed.
- Changes in the Groups pane requires a button press to be saved *except* for the reordering the rows in the “Select Group” and “Group” sections. The changes are saved when
 - The Select Group's New, Duplicate, or Delete buttons are pressed.
 - The Update Name button is pressed.
 - The Time Zone Settings' Add, Update, or Delete buttons are pressed.

The content of the system time zone list cannot be altered using Application Preferences.

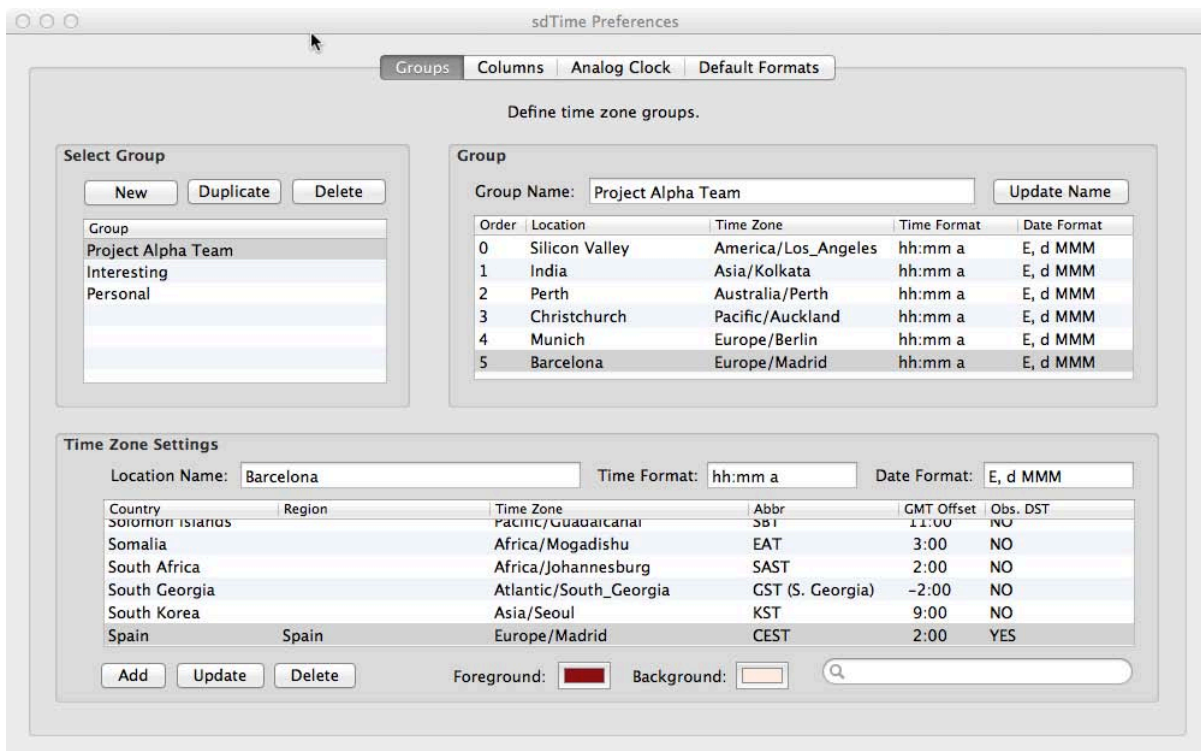
Accessing Application Preferences

The Application Preferences window can be accessed in one of two ways:

- In the sdTime menu, select the “Preferences” menu item.
- Alternatively, you can use the “⌘,” (command-comma) key combination.



The Groups Pane



The Group Pane has three major sections:

1. [Group Operations](#)
2. [Group Content](#)
3. [Zone Definition](#)

Group Operations

Select Group consists of one table view and three buttons.

The table view allows for the selection of the current group.

The three buttons provide the following operations:

1. **New:** Creates a new group with the temporary name “New Group” and with a single time zone with the location name of “Local”. It will use the time zone that is the current system local time zone.
2. **Duplicate:** This button will create an exact copy of the current group, appending the word “copy” to the group name. This option is best if a group exists that is close to the one you want to create but need a few modifications.
3. **Delete:** This deletes the currently selected group.

Group Content

The Group Content section consists of three items:

1. Group Name text field.
2. Update Name button
3. A table view consisting of a list of the time zones that make up the group.

This section allows you to review the time zones in the group, rename the group, and change the default order of the time zones in the group.

Reviewing a Group’s Time Zones

To see the time zones that make up a group simply select the group of interest from the pull-down menu near the top of the window. The list of time zones contained in that group will be displayed in the table directly below the group name.

Renaming a Group

1. Select the group that needs to be renamed from the pull-down menu near the top of the window.
2. Change the name of the group in the text field beside the “Group Name” label.
3. Click the “Update Name” button.

Reordering the Time Zones in a Group

Reordering is done by dragging the rows into new positions. Simply “left-click” on the row that needs to be moved and drag it to the new location and then release the button. The rows will be renumbered accordingly.

Deleting a Location or Time Zone from a Group

You can delete or remove a location from a group using the Time Zone Definition portion of the Group Pane.

Time Zone Definition

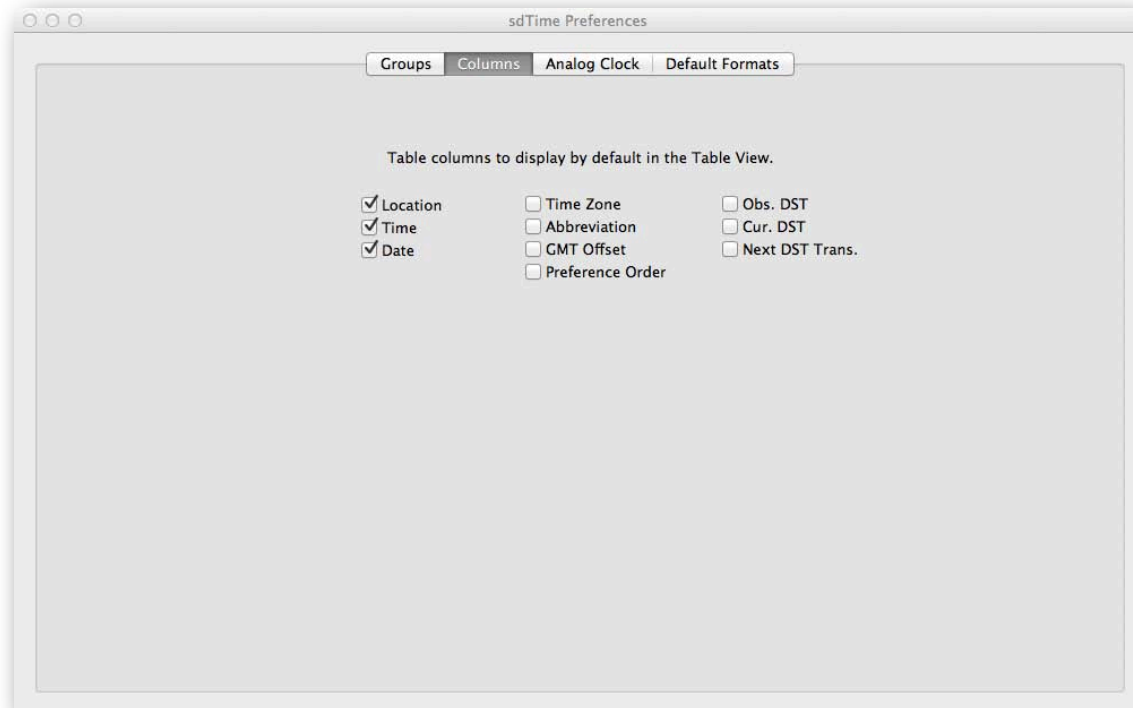
The bottom of the Group Pane allows for the modification of a specific time zone in the group. The operations permitted are:

1. Specifying the “Location Name.” The Location Name is defined by the user and is intended to provide a short, quickly understood identifier of the time zone. The location name can be anything including the name of the person or people, the city name, the region name, or even the time zone name.

2. Define the time format used to display the time in the Table View. For more information on the format options refer to the section of this document titled [Time and Date Formats](#).
3. Define the date format used to display the date in the Table View. For more information on the format options refer to the section of this document titled [Time and Date Formats](#).
4. Select the time zone to be used from the system provided list of time zones. There is a search field in the lower right hand corner that can be used to help search the time zone list. For more information on selecting the time zones refer to the section of this document titled [Time Zone Selection](#).
5. Select the foreground and background colors to use when displaying this location in any of the views. Double clicking on the color well beside “Foreground” or “Background” will bring up the usual Mac OS X color selectors.
6. Specify whether to:
 - a. Add a new zone to the current group using the “**Add**” button.
 - b. Update the currently selected time zone using the “**Update**” button.
 - c. Delete the currently selected time zone using the “**Delete**” button.

If none of the three buttons are pressed, then no changes will be made.

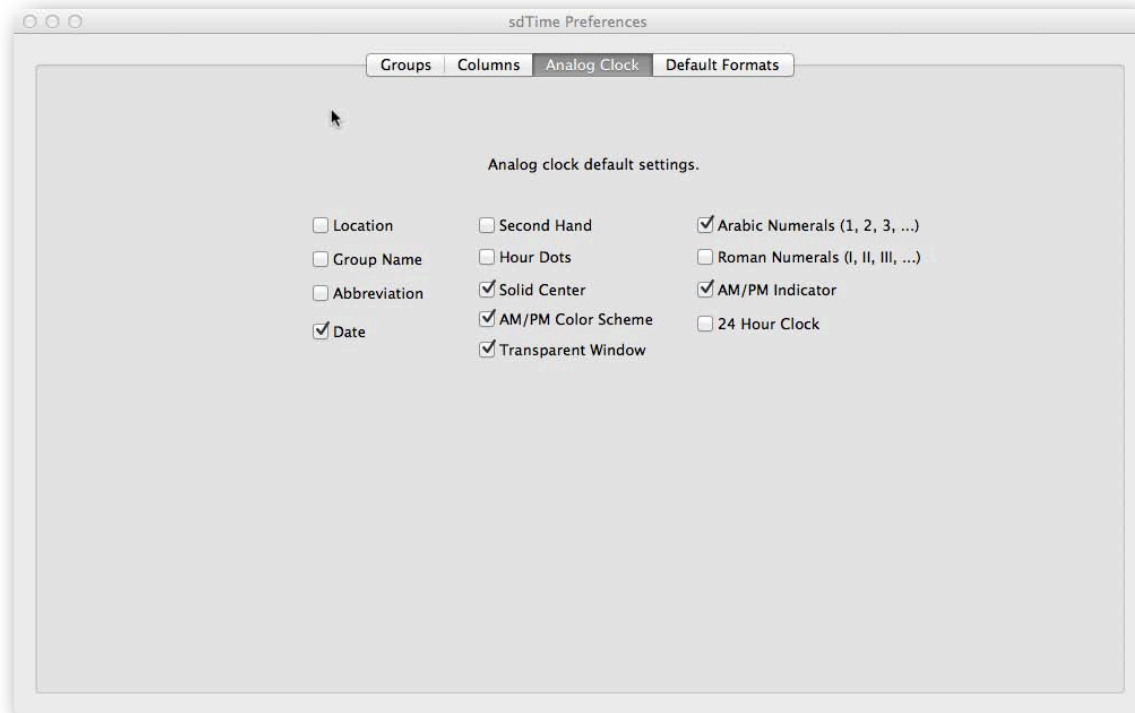
The Columns Pane



The Columns Pane configures which columns are displayed by default in the Table View.

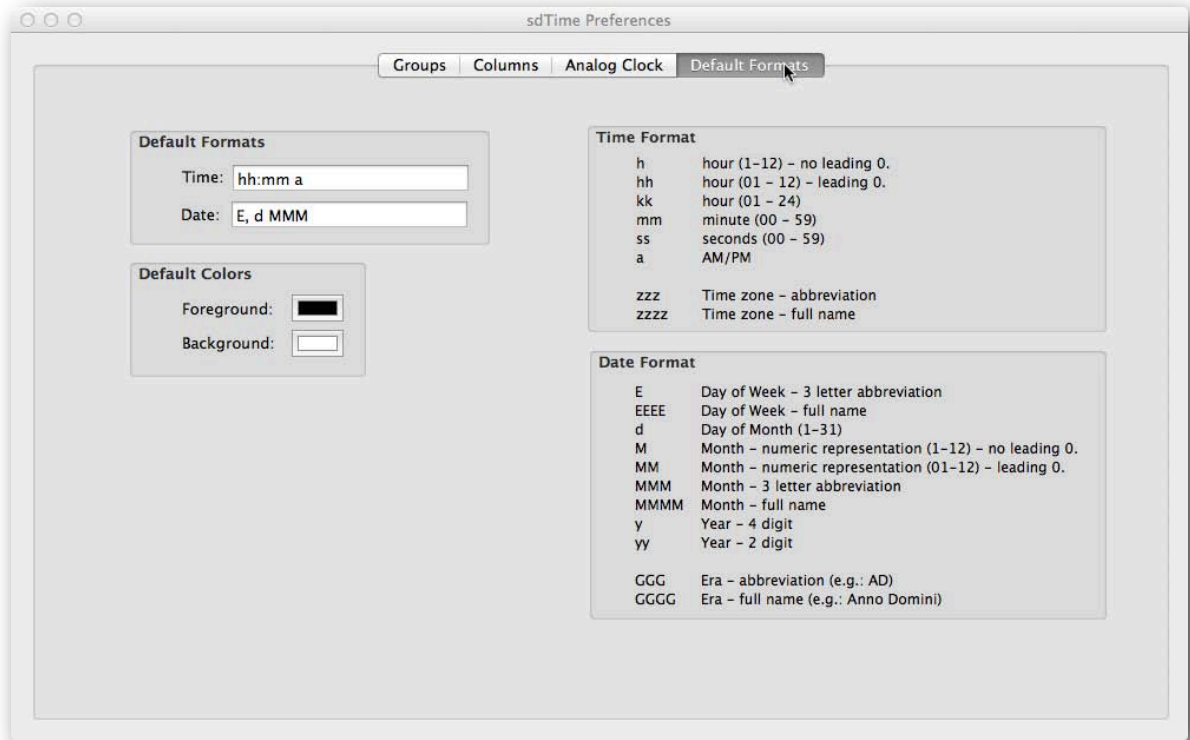
A description of each column can be found earlier in the document in the section titled [Table View Columns](#).

The Analog Clock Pane



The Analog Clock Pane configures the default display characteristics of the Analog Clock. Refer to the “[Analog Clock](#)” description earlier in this document for more information.

Default Formats Pane



The Default Formats Pane changes the default colors, Time Format, Date Format used in the Groups Pane.

Refer to [Time and Date Formats](#) for more information on the formatting options.

The Default Colors can be changed by double clicking on the color well beside the “Foreground” and “Background” labels. This will bring up a standard Mac OS X color interface.

Time and Date Formats

NOTE: Future date formats

The method of specifying the date formats will change in a future release to make it more intuitive and less cryptic.

The following describes the formats available for formatting the time and date fields. The default formats that sdTime is released with are:

- Time format: “hh:mm a”
- Date format: “E, d MMM”

It is possible to specify the time format as “hh:mm a E, d MMM” and have both the time and date data displayed in a single column. Separate columns are provided for aesthetic reasons.

The following format specifiers are the ones that are believed to be interest in sdTime. There are others.

Time Format:

h	hour (1-12) - no leading 0.
hh	hour (01 - 12) - leading 0.
kk	hour (01 - 24)
mm	minute (00 - 59)
ss	seconds (00 - 59)
a	AM/PM
zzz	Time zone - abbreviation
zzzz	Time zone - full name

Date Format:

E	Day of Week - 3 letter abbreviation
EEEE	Day of Week - full name
d	Day of Month (1-31)
M	Month - numeric representation (1-12) - no leading 0.
MM	Month - numeric representation (01-12) - leading 0.
MMM	Month - 3 letter abbreviation
MMMM	Month - full name
y	Year - 4 digit
yy	Year - 2 digit
GGG	Era - abbreviation (e.g.: AD)
GGGG	Era - full name (e.g.: Anno Domini)

If more details are desired, refer to [http://unicode.org/reports/tr35/tr35-10.html#Date Format Patterns](http://unicode.org/reports/tr35/tr35-10.html#Date_Format_Patterns).

Time Zone Selection

sdTime uses the time zone definitions that are a part of Mac OS X. This means that the definitions being used are as current as the definitions provided by the version Mac OS X on which sdTime is being run.

A search field has been provided to help make the location of the time zone of interest easier. This search field searches the Country, Region, Time Zone, and Abbr columns of the table.

Country and Region Columns

The Country and Region mappings to the time zones are provided as part of this software. These mappings were derived from a variety of sources that sometimes had different settings.

If you find an error in this list, please let me know.